

**SUGAR**  
Sintered Glass

ARCHITECTURAL  
CERAMICS



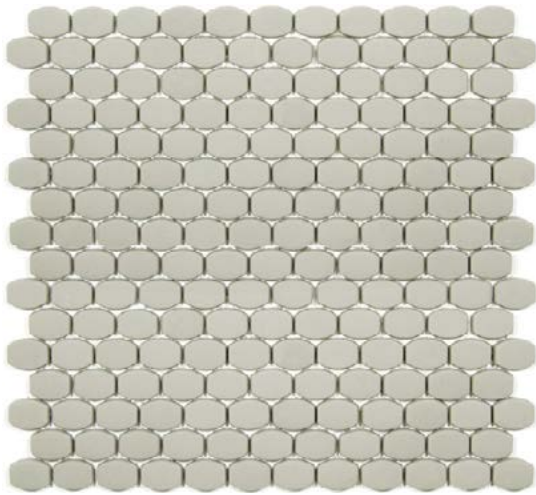
## COLORS



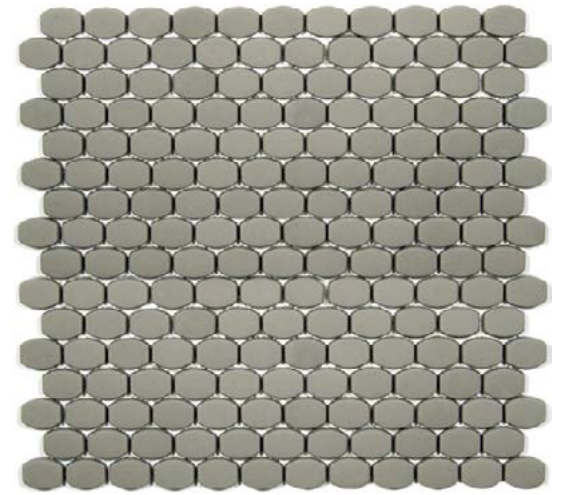
FIZZ



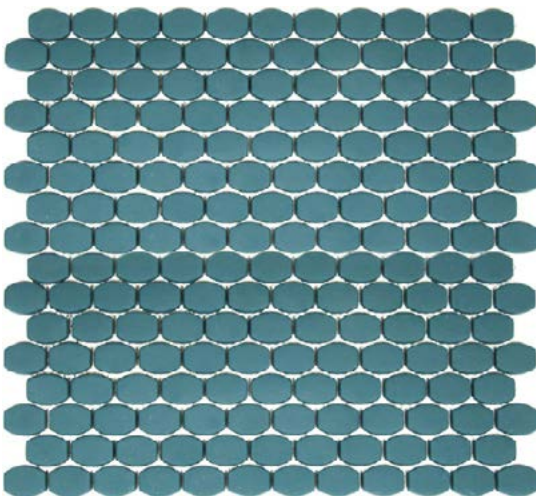
MACARON



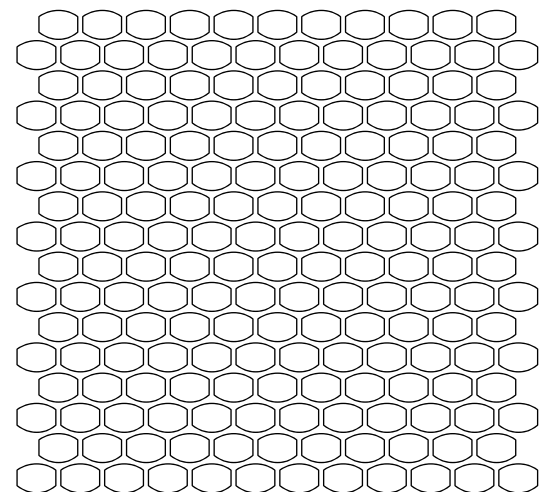
TAFFY



MALT



SPRINKLE



Line Drawing - Sheet Size 11.4x11.8

AVAILABLE SIZES	MOSAIC
	1"x.75"
<i>Sheet Size</i>	11.4x11.8
Fizz	M*
Macaroon	M*
Taffy	M*
Malt	M*
Sprinkle	M*

M=Matte finish, \*Stocked sizes

Lead times for specialty & non-stocked items varies depending on product ordered, quantity, and destination. Please contact ACI to determine the lead time to order samples and material.

## DESCRIPTION

The Sugar Collection by Erin Adams for Architectural Ceramics features barrel shaped sintered glass mosaics in five exclusive colors. Sintered glass is made by pressing glass powder into dies and then heating until the particles fuse together. The color is mixed into the powder to create a smooth uniform look.

## INSTALLATION & MAINTENANCE

The Erin Adams Sugar Collection may be installed using standard glass tile installation methods and materials, as recommended by the Tile Council of North America (TCNA). An Architectural Ceramics sales representative will advise you on general installation questions. Do not install this product with mastic or epoxy grout. Grouting should be done with non-sanded cementitious grouts and the suggested grout width is 2mm. Before grouting this product sealing with a water based penetrating sealer is required.

## TECHNICAL INFORMATION

ORIGIN: CHINA  
 AVAILABLE FINISHES: MATTE  
 TYPE: SINTERED / ENAMEL GLASS  
 EDGE: N/A  
 LOOK: MOSAIC  
 APPLICATION: WALL & FLOOR  
 USE: HEAVY COMMERCIAL  
 PACKAGING: PLEASE CONSULT YOUR ACI SALES REP FOR PACKAGING INFORMATION

COLOR VARIATION: V1 - UNIFORM APPEARANCE  
 THICKNESS: 3/8"  
 PORCELAIN ENAMEL INSTITUTE SCALE: TEST NOT AVAILABLE FOR UNGLAZED TILES. SURFACE ABRASION RATING = CLASS 5  
 DYNAMIC COEFFICIENT OF FRICTION: N/A  
 BREAKING STRENGTH: N/A  
 WATER ABSORPTION: 0%  
 STAIN RESISTANCE: YES  
 FROST RESISTANCE: YES  
 ENVIRONMENT: 100% RECYCLED CONTENT

## WEBSITE LINKS

[www.architecturalceramics.com/catalogs](http://www.architecturalceramics.com/catalogs)

PLEASE NOTE THIS LINK IS CASE SENSITIVE

## CONTACT INFORMATION:

[www.architecturalceramics.com](http://www.architecturalceramics.com)

1.800.287.1742

For general sales inquiries: [sales@architecturalceramics.com](mailto:sales@architecturalceramics.com)

For commercial & hospitality sample requests: [samples@architecturalceramics.com](mailto:samples@architecturalceramics.com)

Headquarters: 800 E Gude Dr Suite F Rockville, MD 20850